

Site Name: <b>Land off Horsbere Drive, Longford</b>	Drawing number: <b>LC.P.1</b>		Revision: <b>1</b>
	Drawn By: <b>POK</b>	Checked By: <b>GLJ</b>	Scale: <b>1:500@A3</b>
Drawing Title: <b>Location Plan</b>	Date: <b>22.01.2021</b>		

**KEY**



Apartments

Parking Courts

Bin/ Cycle Stores

New Hedgerow planting

Proposed Tree Planting

Access Road

Main access

Footpath Link

Possible Emergency Access

Lockable Gates

Retained trees  
1.8 m Screenwall

Motorcycle Parking

Cycle Store- 12 bikes per store  
Bin Store

CS

BS



Site Name: <b>Longford</b>	Revision:	<b>C</b>
	Drawing Number: <b>LC-P.3.2</b>	Scale: <b>1:500@A3</b>
Drawing Title: <b>Proposed Site Layout</b>	Drawn By: <b>POK</b>	Date: <b>21.01.2021</b>
	Checked By: <b>GRU</b>	Date: <b>21.01.2021</b>

**Robert Hitchhins**  
The Complete Development Solution

The Manor, Biddington, Chichester, Gloucestershire, GL15 0TJ  
Tel: 01242 69604  
www.roberthitchhins.co.uk



## INDICATIVE PLANT LIST

### Street Trees

- Carpinus betulus 'Fastigiata'
- Sorbus aria 'Majestica'

### Feature Trees

- Malus 'Evereste'
- Pyrus communis 'Conference'
- Malus domestica 'Cox's Orange Pippin'
- Prunus 'Pandora'

### Formal Native Hedge

- Carpinus betulus
- Ilex aquifolium

### Ornamental Planting

- Ceanothus burkwoodii
- Choisya Ternata
- Hebe albicans 'Red Edge'
- Hebe Sutherlandii
- Hydrangea petiolaris
- Olearia haastii
- Philadelphus 'Manteau d'Hermine'
- Rosa 'Kent'
- Spiraea Snowmound

### Herbaceous & Bulbs

- Crocus sieberi
- Narcissus pseudonarcissus
- Nepeta x fassenii
- Tulipa 'Indian Velvet'
- Verbena bonariensis
- Vinca minor

## KEY



Existing Tree  
(Carpinus betulus 'Fastigiata')

Proposed Street Tree

Proposed Feature Tree

Proposed Hedge

Proposed Ornamental Planting

Amenity Grass

Proposed Bulb Planting



Spiraea Snowmound



Hydrangea petiolaris



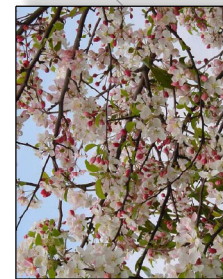
Vinca Minor



Rosa 'Kent'



Hebe albicans 'Red Edge'



Malus 'Evereste'



Carpinus betulus 'Fastigiata'



Prunus 'Pandora'



Sorbus aria 'Majestica'

**Robert Hitchins**  
The Complete Development Solution

Site Name:  
LONGFORD

Drawing Title:  
LANDSCAPE CONCEPT PLAN

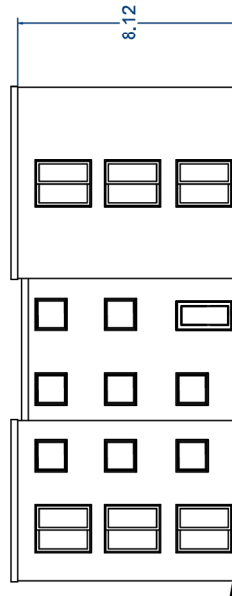
Drawing Number:  
LC-P-3.3

Revision:  
A

Drawn By: GRJ  
Checked By: GRJ  
Date: 12/08/21  
Scale: 1:500 @ A3


The Manor, Boddington, Cheltenham, Gloucestershire, GL51 0TJ  
Tel: 01242 680694  
www.robert-hitchins.co.uk

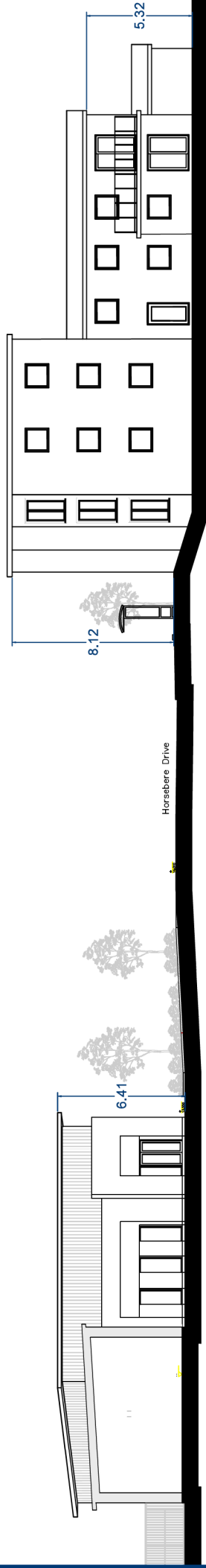
CAD Ref: REFERENCE




Horsebore Drive

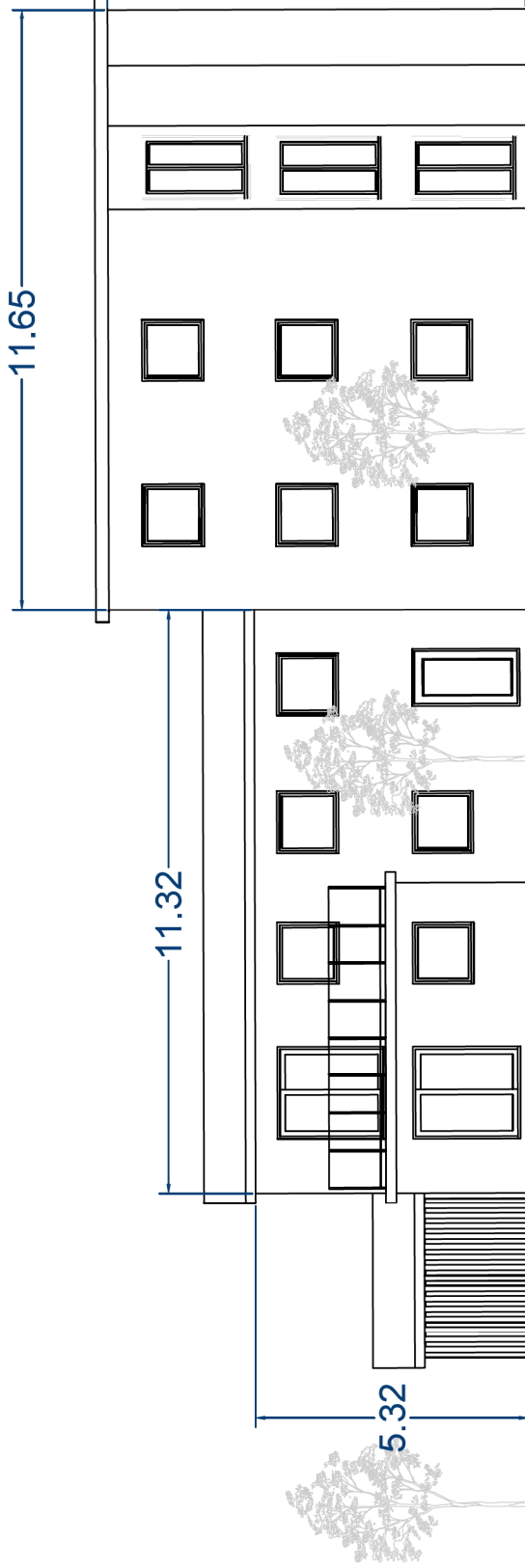
Existing road and paths

Site Name: <b>Longford</b>		Drawing Number: <b>LC.P.7.0</b>		Revision:	
Drawing Title: <b>Section A-A</b>		Drawn By: <b>POK</b>		Scale: <b>1:200@A3</b>	
		DATE: <b>29.01.2021</b>			
				 <b>Robert Hitchins</b> The Complete Development Solution The Manor, Boddington, Cheltenham, Gloucestershire, GL51 0JF Tel: 01242 680004 www.roberthitchins.co.uk	



Existing road and path


Site Name: <b>Longford</b>		Drawing Number: <b>LC.P.7.1</b>		Revision:	
Drawing Title: <b>Section B-B</b>		Drawn By: <b>POK</b>		Scale: <b>1:200@A3</b>	
		Date: <b>29.01.2021</b>		Scale: <b>1:200@A3</b>	
 <b>Robert Hitchins</b> The Complete Development Solution The Manor, Bodfingers, Chesham, Bucks HP8 4JN, UK Tel: 01292 800004 www.roberthitchins.co.uk					

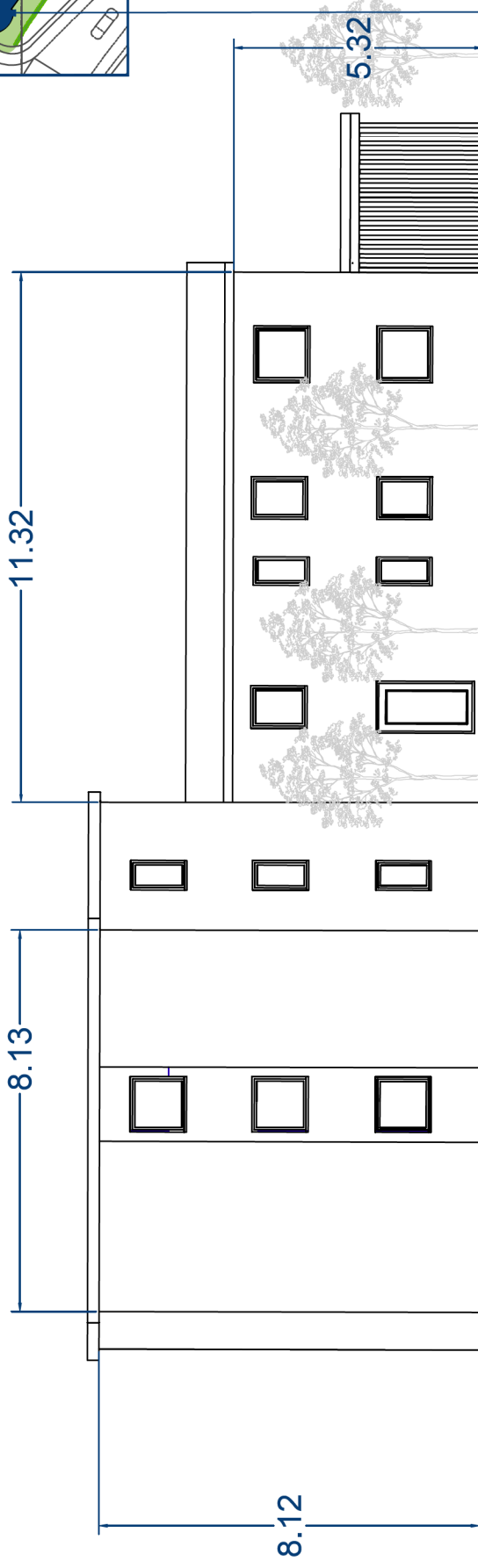


8.12

Block A

Front Elevation

Site Name: Longford		Drawing Number: LC.P.4.3		Revision:	
Drawing Title: Apartment Front Elevation - Block A		Drawn By: POK	Date: 16.08.2021	Scale: 1:100@A3	Revision:
 <b>Robert Hitchins</b> The Complete Development Solution The Manor, Boddington, Cheltenham, Gloucestershire, GL51 0JY Tel: 01242 800004 www.roberthitchins.co.uk					

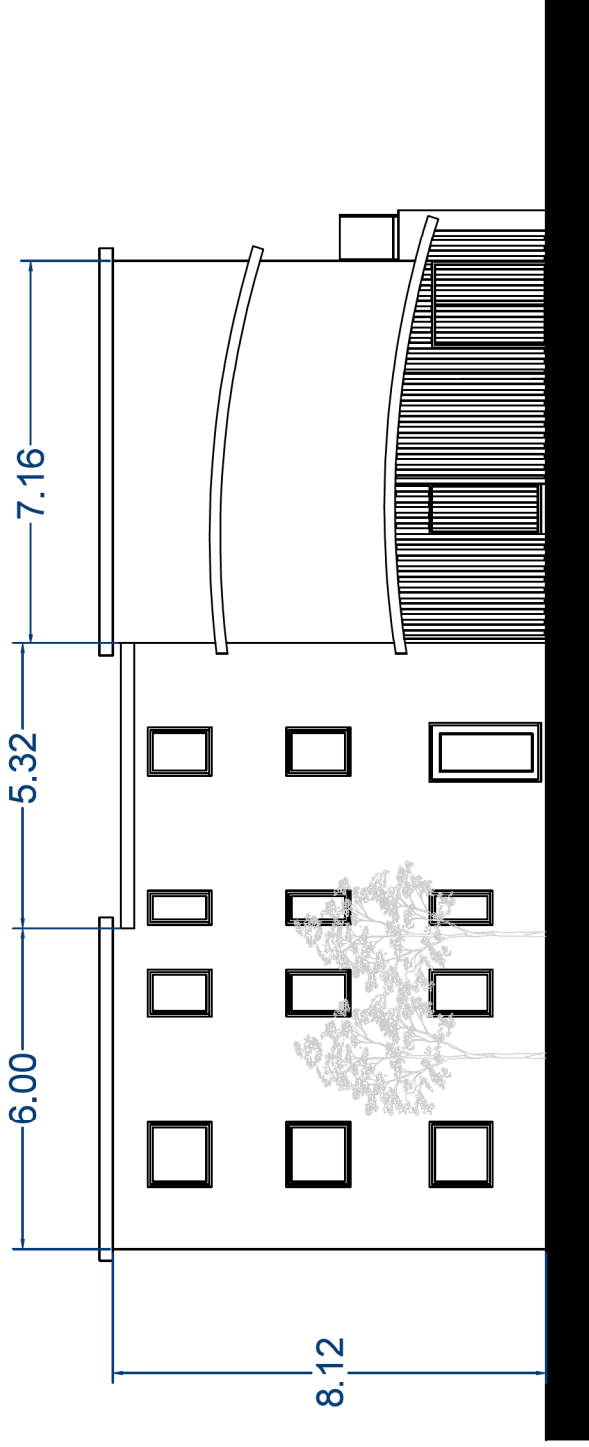


Rear Elevation

Block A

Site Name: <b>Longford</b>		Drawing Number: <b>LC.P.4.4</b>		Revision: 	
Drawing Title: <b>Apartment Rear Elevation - Block A</b>		Drawn By: <b>POK</b>		Date: <b>16.08.2021</b>	
				Scale: <b>1:100@A3</b>	






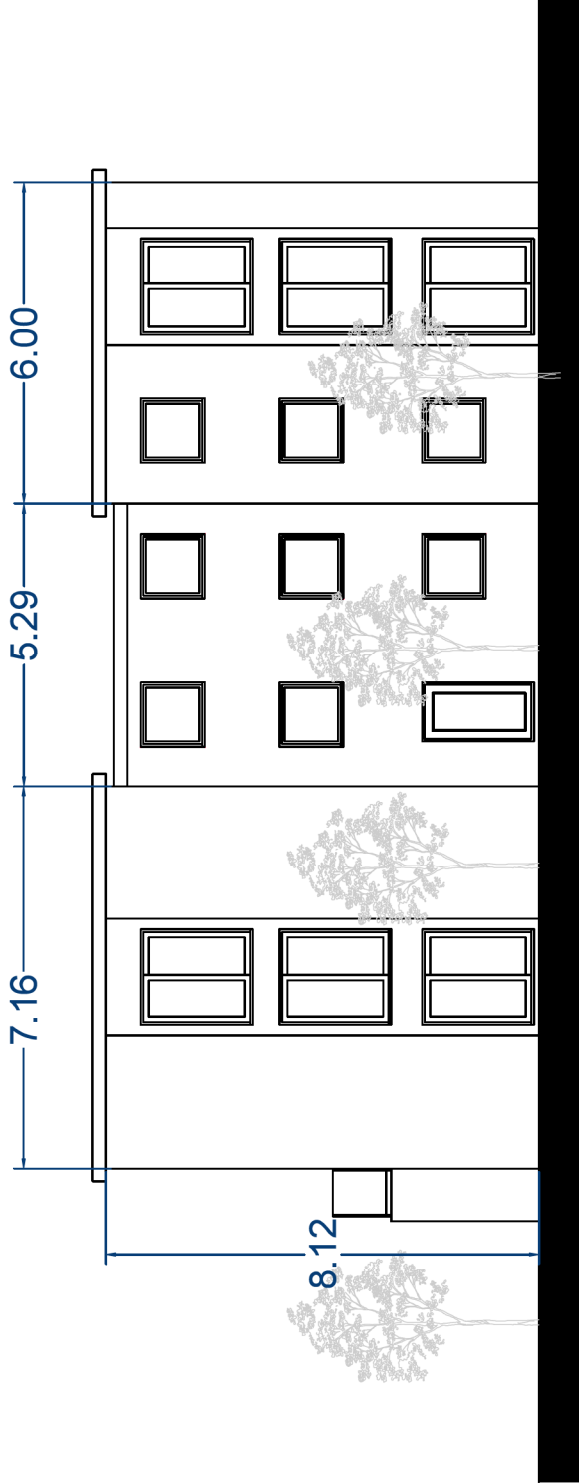
Side Elevation 1



Block A

Site Name: Longford		Drawing Number: LC.P.4.5		Revision:	
Drawing Title: Apartment Side Elevation -1- Block A		Drawn By: POK	Date: 16.08.2021	Scale: 1:100@A3	
 <b>Robert Hitchins</b> The Complete Development Solution The Manor, Boddington, Cheshire, Macclesfield, SK10 0TJ Tel: 01242 800004 <a href="http://www.roberthitchins.co.uk">www.roberthitchins.co.uk</a>					



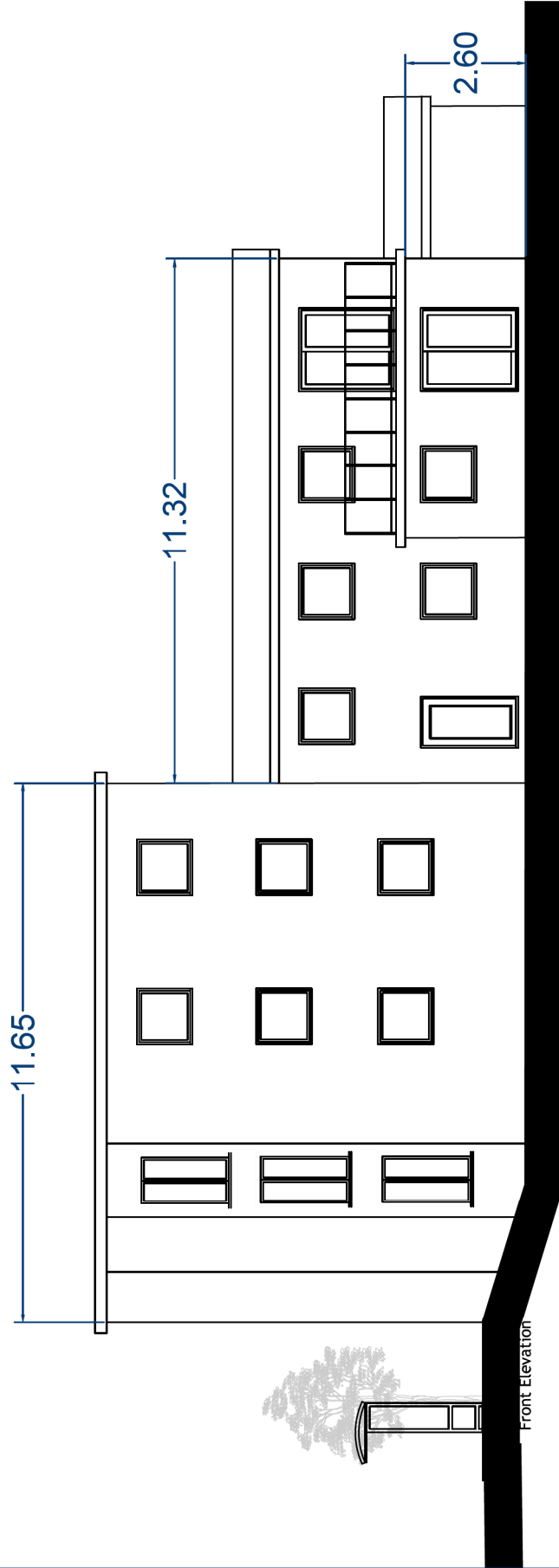


Side Elevation 2

Block A


Site Name: <b>Longford</b>		Drawing Number: <b>LC.P.4.6</b>		Revision:	
Drawing Title: <b>Apartment Side Elevation -2- Block A</b>		Drawn By: <b>POK</b>		Scale: <b>1:100@A3</b>	
		Date: <b>16.08.2021</b>			
				The Author: <b>Robert Hitchins Architects, Gloucestershire, GL5 0TJ</b> Tel: 01242 800004 www.roberthitchins.co.uk	

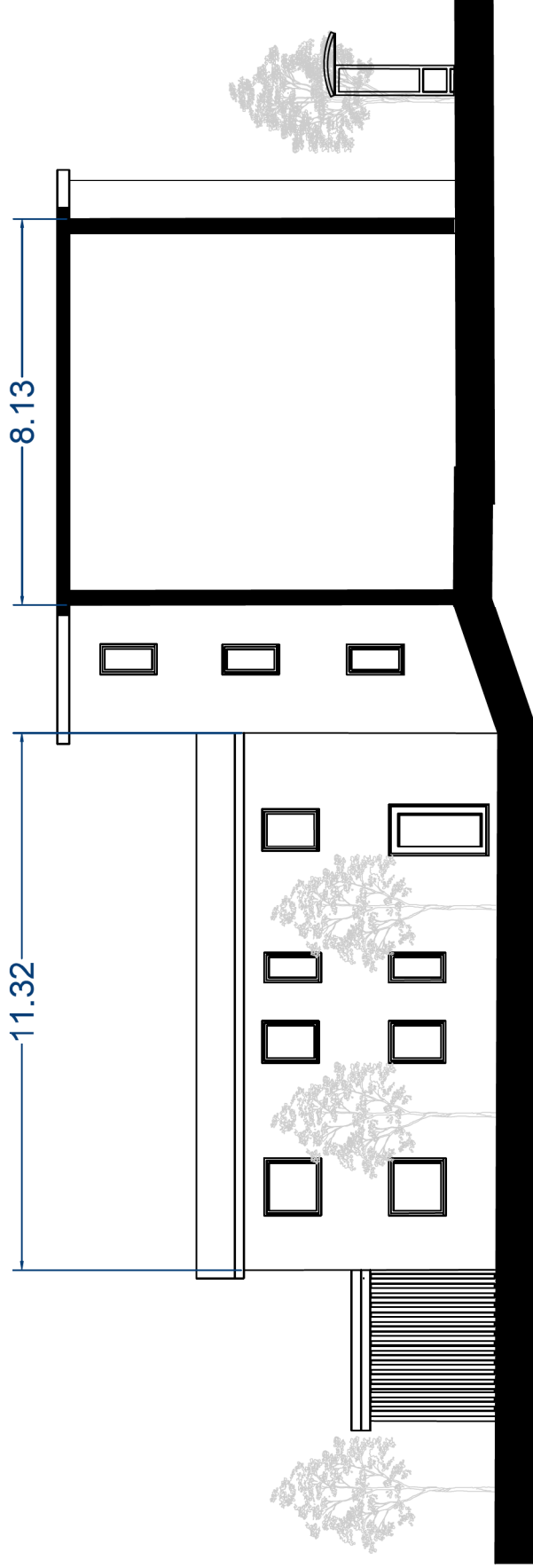




Front Elevation


Block B

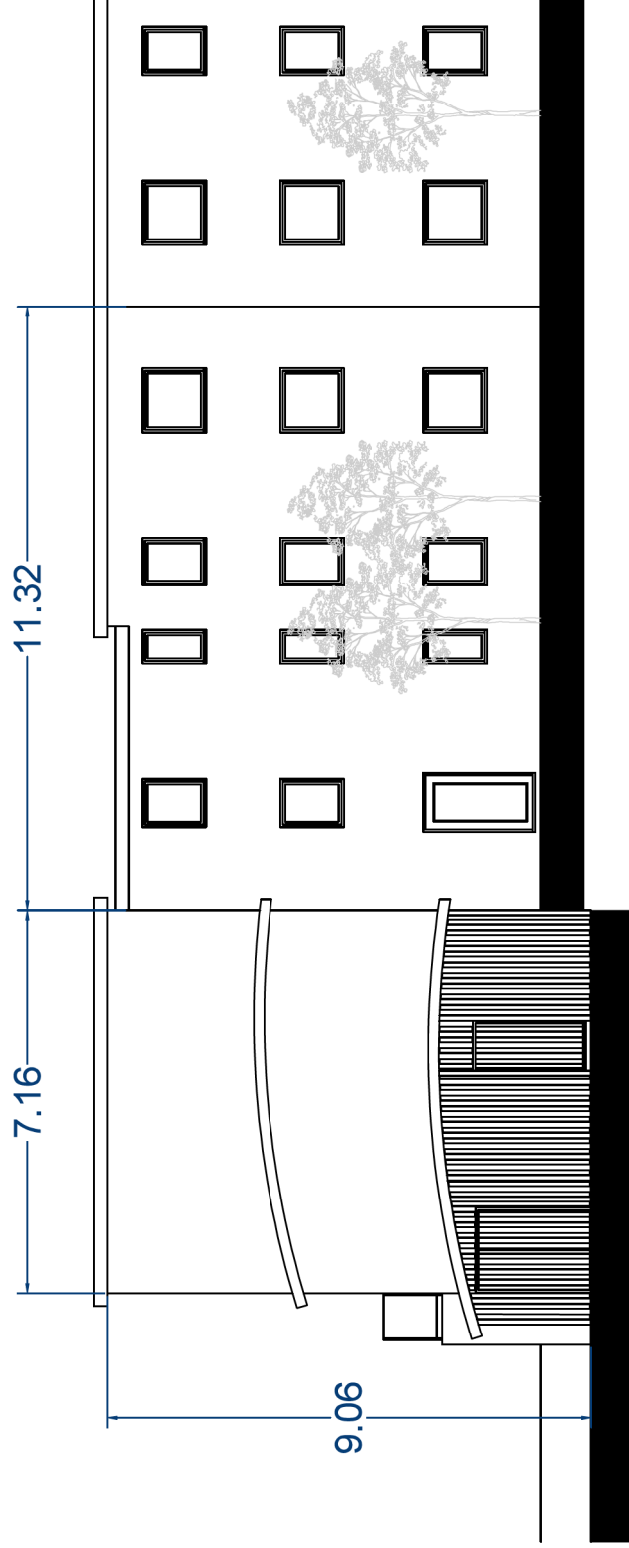
Site Name: Longford		Drawing Number: LC.P.5.3		Revision:	
Drawing Title: Apartment Front Elevation - Block B		Drawn By: POK	Date: 16.08.2021	Scale: 1:100@A3	
 <b>Robert Hitchins</b> The Complete Development Solution The Manor, Boddington, Cloucestershire, GL5 0TJ Tel: 01242 80004 www.roberthitchins.co.uk					



Rear Elevation


Block B

Site Name: Longford		Drawing Number: LC.P.5.4		Revision:	
Drawing Title: Apartment Rear Elevation - Block B		Drawn By: POK	Date: 16.08.2021	Scale: 1:100@A3	
 <b>Robert Hitchins</b> The Complete Development Solution The Manor, Boddington, Cheltenham, Gloucestershire, GL51 0JY Tel: 01242 600004 www.roberthitchins.co.uk					



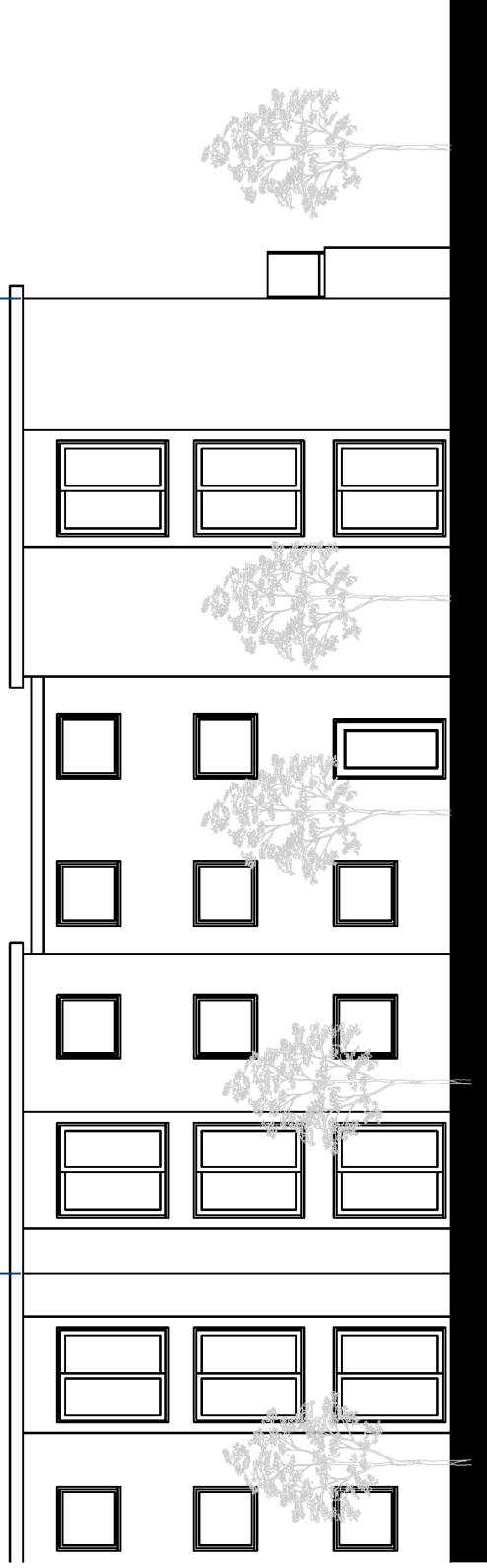
Side Elevation 1

Block B

Site Name: Longford		Drawing Number: LC.P.5.5		Revision:	
Drawing Title: Apartment Side Elevation 1 - Block B		Drawn By: POK	Date: 16.08.2021	Scale: 1:100@A3	
 <p>Robert Hitchins The Complete Development Solution</p> <p>The Manor, Boddington, Cheltenham, Gloucestershire, GL51 0JY Tel: 01242 600004 www.roberthitchins.co.uk</p>					




18.47

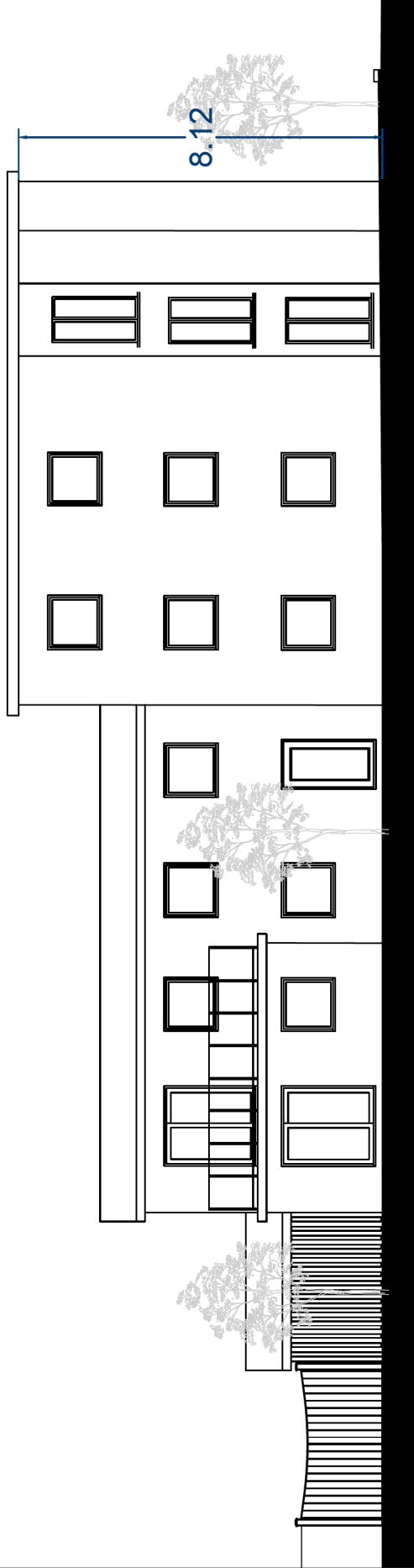


Side Elevation 2

Block B


Site Name: <b>Longford</b>		Drawing Number: <b>LC.P.5.6</b>		Revision:	
Drawing Title: <b>Apartment Side Elevation 2 - Block B</b>		Drawn By: <b>POK</b>		Scale: <b>1:100@A3</b>	
		Date: <b>16.08.2021</b>			
 <b>Robert Hitchins</b> The Complete Development Solution The Manor, Boddington, Cheltenham, Gloucestershire, GL51 0TJ Tel: 01242 680004 www.roberthitchins.co.uk					

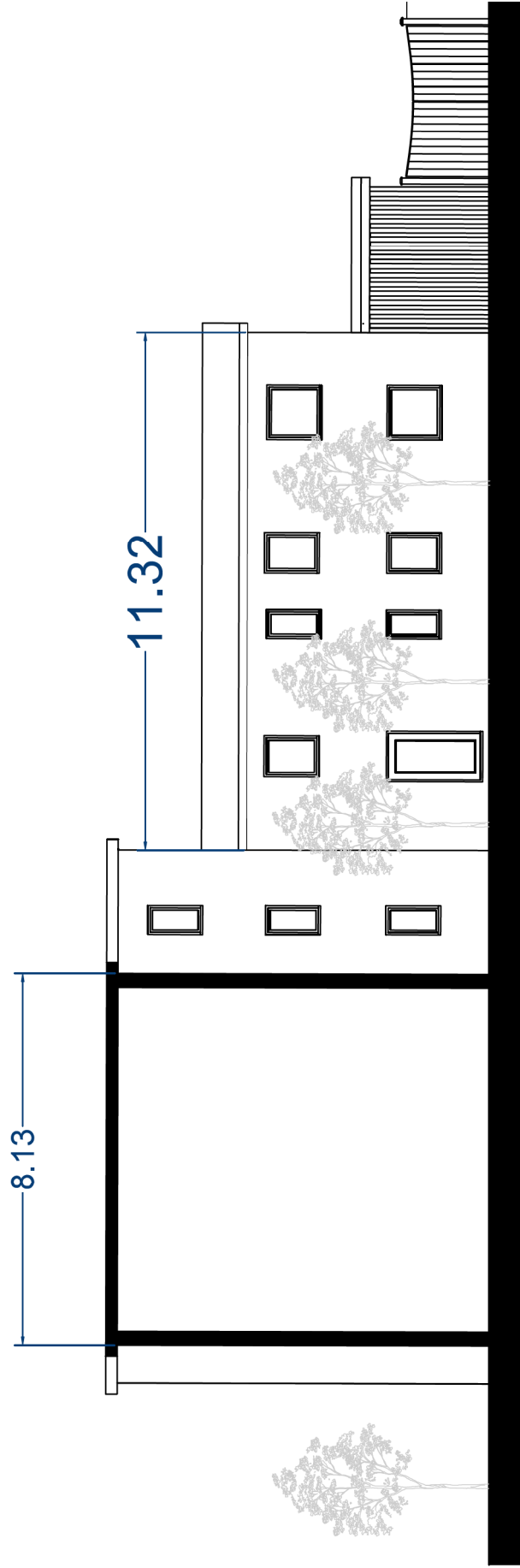




Front Elevation


Block C

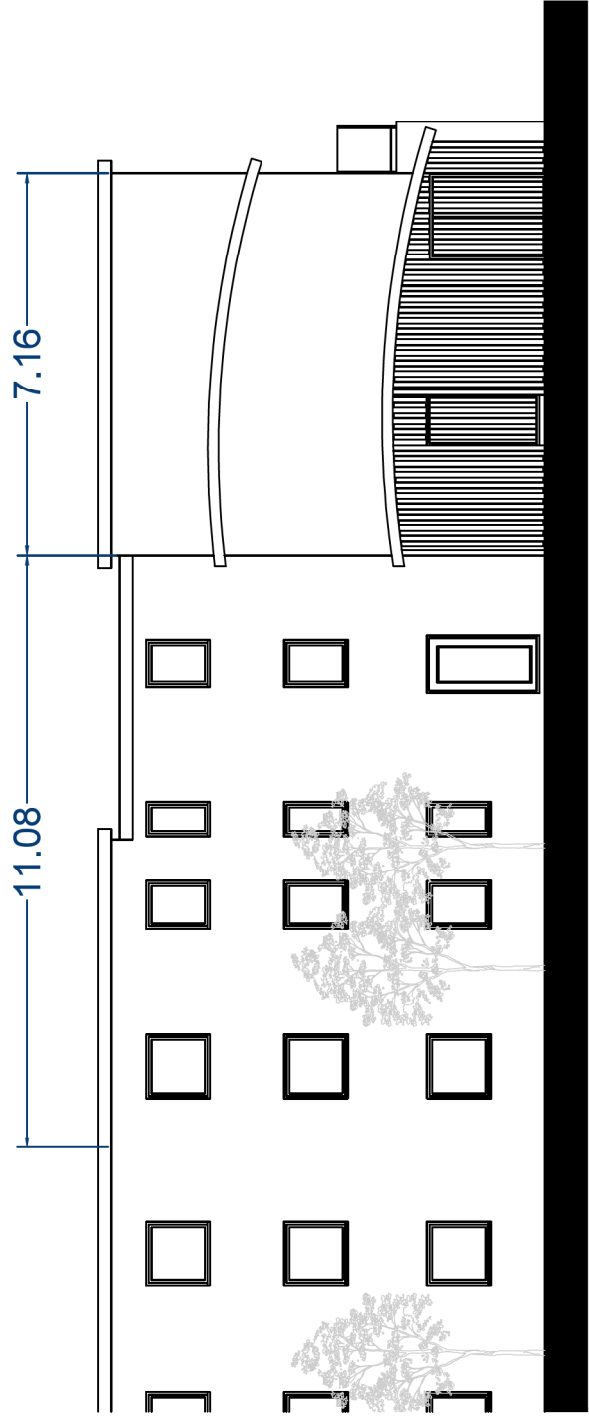
Site Name: <b>Longford</b>		Drawing Number: <b>LC.P.6.3</b>		Revision: 	
Drawing Title: <b>Apartment Front Elevation - Block C</b>		Drawn By: <b>POK</b>		Date: <b>16.08.2021</b>	
				Scale: <b>1:100@A3</b>	
 <b>Robert Hitchins</b> The Complete Development Solution The Manor, Boddington, Clacton-on-Sea, Clacton-on-Sea, C55 0TJ Tel: 01742 800004 <a href="http://www.roberthitchins.co.uk">www.roberthitchins.co.uk</a>					



Rear Elevation


Block C

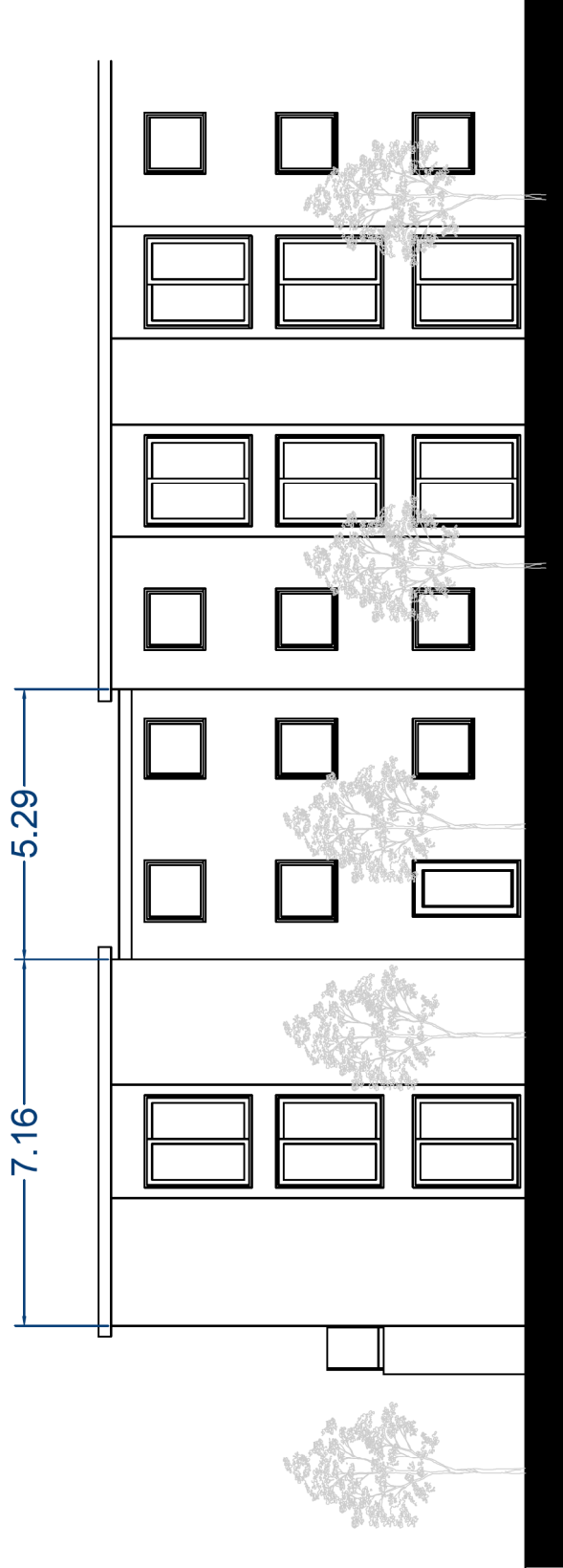
Site Name: <b>Longford</b>		Drawing Number: <b>LC.P.6.4</b>		Revision:	
Drawing Title: <b>Apartment Rear Elevation - Block C</b>		Drawn By: <b>POK</b>	Date: <b>16.08.2021</b>	Scale: <b>1:100@A3</b>	Revision:
 <b>Robert Hitchins</b> The Complete Development Solution The Manor, Boddington, Cheltenham, Gloucestershire, GL51 0JY Tel: 01242 690094 www.roberthitchins.co.uk					



Side Elevation 1

Block C

Site Name: Longford		Drawing Number: LC.P.6.5		Revision:	
Drawing Title: Apartment Side Elevation -1 - Block C		Drawn By: POK	Date: 16.08.2021	Scale: 1:100@A3	
 <b>Robert Hitchins</b> The Complete Development Solution The Manor, Boddington, Cheltenham, Gloucestershire, GL51 0JY Tel: 01242 800004 <a href="http://www.roberthitchins.co.uk">www.roberthitchins.co.uk</a>					



Side Elevation 2

Block C

Site Name: <b>Longford</b>		Drawing Number: <b>LC.P.6.6</b>		Revision:	
Drawing Title: <b>Apartment Side Elevation -2 - Block C</b>		Drawn By: <b>POK</b>	Date: <b>16.08.2021</b>	Scale: <b>1:100@A3</b>	
<small>The Manor, Boddington, Cheltenham, Gloucestershire, GL51 0JY Tel: 01242 690904 www.roberthitchins.co.uk</small>					